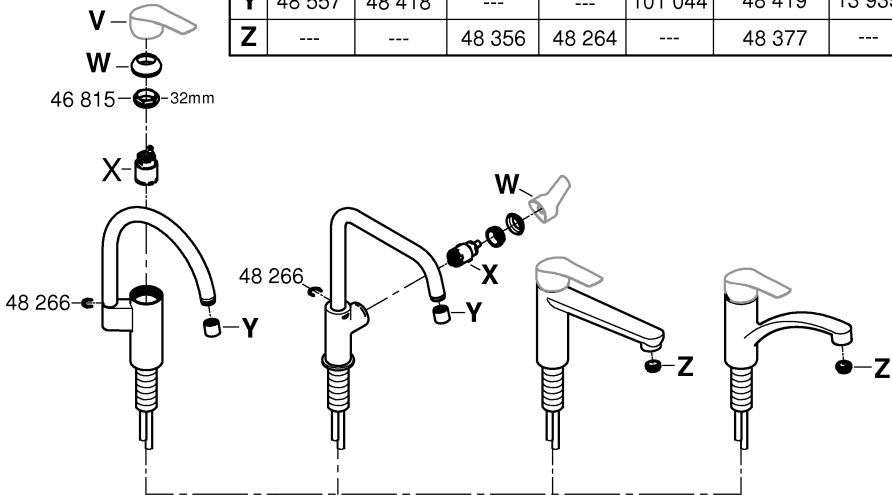


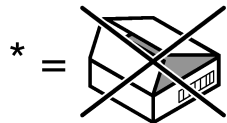
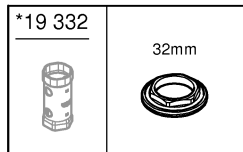
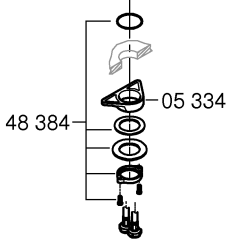


V	48 530	48 540	---	48 531
W	46 492	46 492	---	46 492
X	46 374	46 863	46 824 (F)	46 963
		46 824 (F)		

	25 l/min	15 l/min	13 l/min	11 l/min	9 l/min	(KSA)	(UAE)	(CN)
Y	48 557	48 418	---	---	101 044	48 419	13 935	
Z	---	---	48 356	48 264	---	48 377	---	



46 815 - 32mm





DIN EN
806

DIN EN
1717

DIN
1988



bar

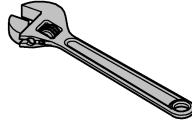
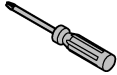


°C

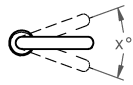
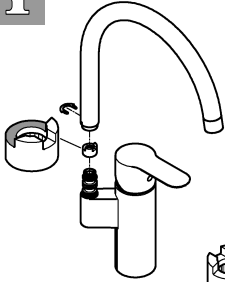
max. 10
0,5



max. 70° thumbs up
max. 60° thumbs down



32mm
*19 332



150°



0°

1

