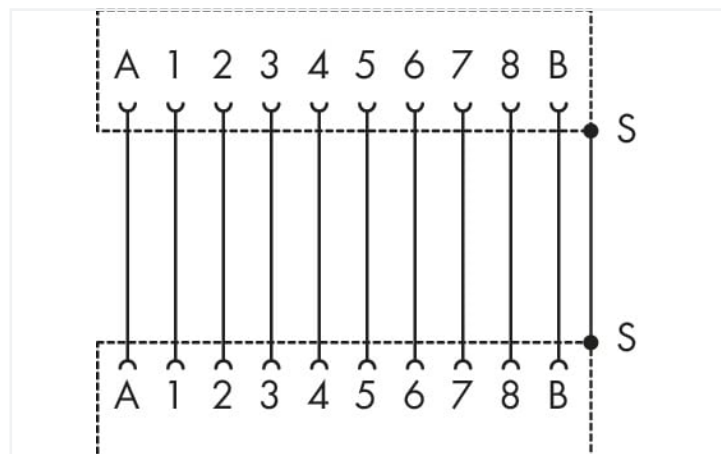
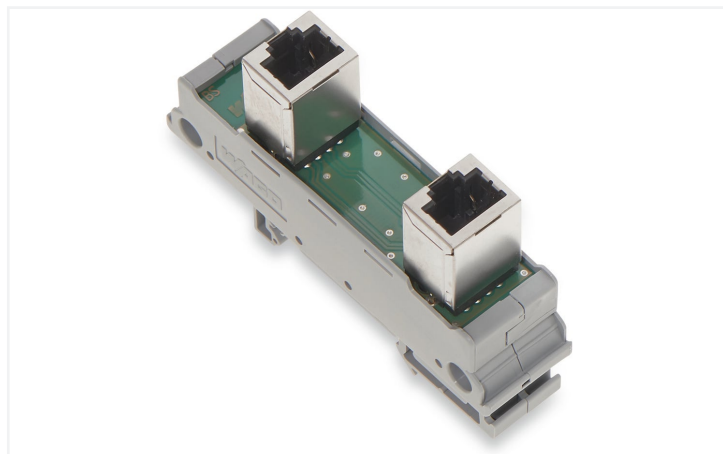


Data Sheet | Item Number: 289-176

Interface module; RJ-45; with power jumper contacts; RJ-45; Cat. 5; in mounting carrier

<https://www.wago.com/289-176>



Electrical data

Operating voltage	≤35 VAC; ≤50 VDC
Nominal current	2.1 A
Insulation resistance	≥ 500 MΩ
Specialty functions	With power jumper contacts

Safety and protection

Dielectric strength (contact/contact) (AC, 1 min)	1 kVrms
---------------------------------------------------	---------

Connection data

Mating cycles	1000
Transmission length (max.)	100 m
Connection cable	Cat. 5 (min.)

Connection 1

Connector	RJ-45 (shielded); with two additional power contacts
Pole number 1	10
Connection type 1	System

Connection 2

Connector 2	RJ-45 (shielded); with two additional power contacts
Pole number 2	10
Connection type 2	System

Physical data

Width	30 mm / 1.181 inches
Height	85 mm / 3.346 inches
Depth from upper-edge of DIN-rail	43 mm / 1.693 inches

Mechanical data

Mounting type	DIN-35 rail
Housing design	Mounting carrier
Mating cycles	1000

Material data

Fire load	0.772 MJ
Weight	17.5 g

Environmental requirements

Ambient temperature (operation)	-40 ... +85 °C
Ambient temperature (storage)	-40 ... +85 °C
Relative humidity	≤ 85% (non-condensing)

Commercial data

Product Group	6 (INTERFACE ELECTRONIC)
eCl@ss 10.0	19-17-90-01
eCl@ss 9.0	19-17-90-01
ETIM 8.0	EC001121
ETIM 7.0	EC001121
PU (SPU)	10 (1) pcs
Packaging type	Box
Country of origin	DE
GTIN	4045454326128
Customs tariff number	85366990990

Environmental Product Compliance

RoHS Compliance Status	Compliant, No Exemption
------------------------	-------------------------

Downloads

Environmental Product Compliance

Compliance Search

Environmental Product Compliance 289-176	↓
------------------------------------------	-------------------

Documentation





Bid Text

289-176	19.02.2019	xml 3.40 KB	↓
289-176	09.02.2015	doc 25.50 KB	↓

Instruction Leaflet

	pdf 1246.19 KB	↓
--	-------------------	-------------------

CAD/CAE-Data

CAD data	CAE data
2D/3D Models 289-176 	EPLAN Data Portal 289-176 
	WSCAD Universe 289-176 
	ZUKEN Portal 289-176 

1 Compatible Products

1.1 Optional Accessories

1.1.1 Marking

1.1.1.1 Marking strip



Item No.: 709-196

Marking strips; for laser printer; translucent



Item No.: 709-177

Marking strips; on reel; 7.5 mm wide; not stretchable; plain; snap-on type; translucent



Item No.: 709-178

Marking strips; on reel; 7.5 mm wide; not stretchable; plain; snap-on type; white