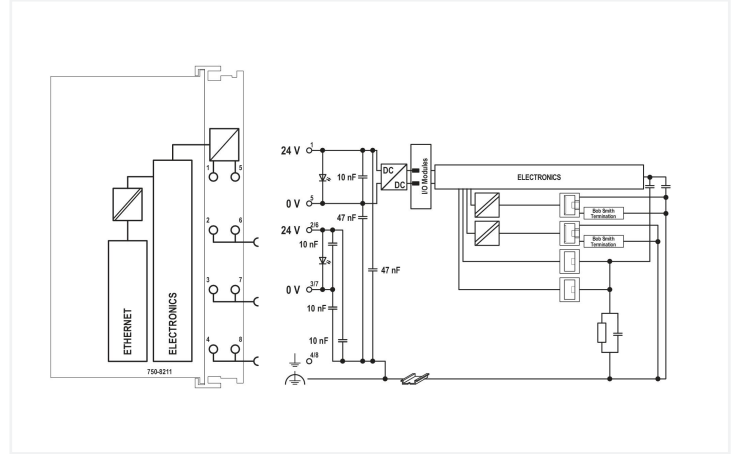
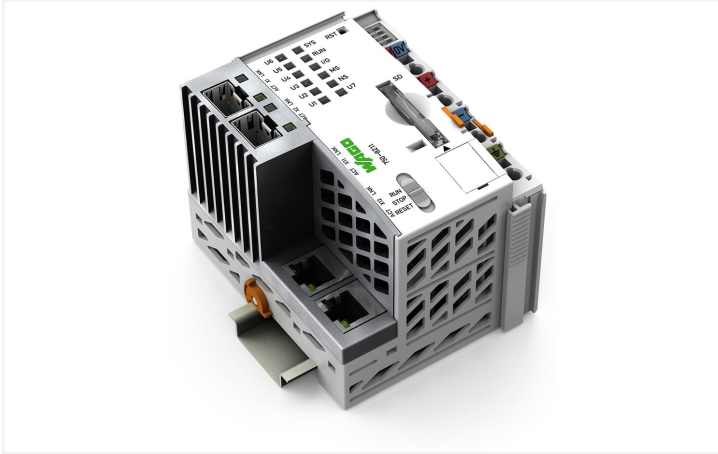


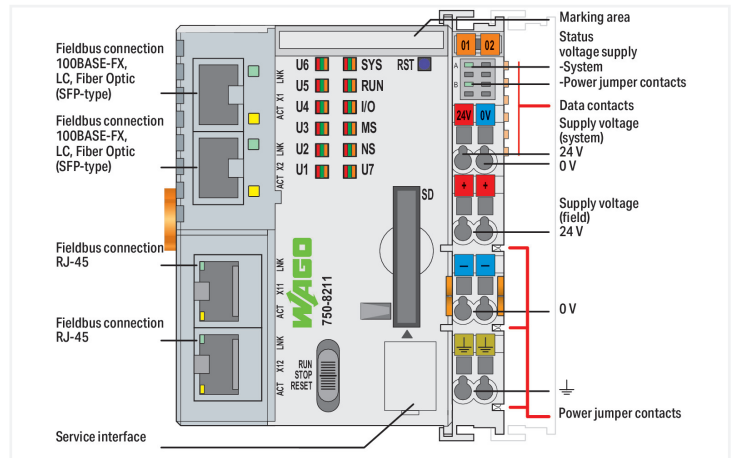
**Data Sheet | Item Number: 750-8211**  
**Controller PFC200; 2nd Generation; 2 x ETHERNET, 2 x 100Base-FX**

<https://www.wago.com/750-8211>



PFC200 Communication Options Overview

| Option                                 | Part Number  | Description                            | Ordering | Notes                 |
|----------------------------------------|--------------|----------------------------------------|----------|-----------------------|
| 100BASE-FX, LC, Fiber Optic (SFP-type) | 750-8211-001 | 100BASE-FX, LC, Fiber Optic (SFP-type) | 1        | Requires 750-8211-001 |
| 100BASE-FX, LC, Fiber Optic (SFP-type) | 750-8211-002 | 100BASE-FX, LC, Fiber Optic (SFP-type) | 1        | Requires 750-8211-001 |
| 100BASE-FX, LC, Fiber Optic (SFP-type) | 750-8211-003 | 100BASE-FX, LC, Fiber Optic (SFP-type) | 1        | Requires 750-8211-001 |
| 100BASE-FX, LC, Fiber Optic (SFP-type) | 750-8211-004 | 100BASE-FX, LC, Fiber Optic (SFP-type) | 1        | Requires 750-8211-001 |
| 100BASE-FX, LC, Fiber Optic (SFP-type) | 750-8211-005 | 100BASE-FX, LC, Fiber Optic (SFP-type) | 1        | Requires 750-8211-001 |
| 100BASE-FX, LC, Fiber Optic (SFP-type) | 750-8211-006 | 100BASE-FX, LC, Fiber Optic (SFP-type) | 1        | Requires 750-8211-001 |
| 100BASE-FX, LC, Fiber Optic (SFP-type) | 750-8211-007 | 100BASE-FX, LC, Fiber Optic (SFP-type) | 1        | Requires 750-8211-001 |
| 100BASE-FX, LC, Fiber Optic (SFP-type) | 750-8211-008 | 100BASE-FX, LC, Fiber Optic (SFP-type) | 1        | Requires 750-8211-001 |
| 100BASE-FX, LC, Fiber Optic (SFP-type) | 750-8211-009 | 100BASE-FX, LC, Fiber Optic (SFP-type) | 1        | Requires 750-8211-001 |
| 100BASE-FX, LC, Fiber Optic (SFP-type) | 750-8211-010 | 100BASE-FX, LC, Fiber Optic (SFP-type) | 1        | Requires 750-8211-001 |
| 100BASE-FX, LC, Fiber Optic (SFP-type) | 750-8211-011 | 100BASE-FX, LC, Fiber Optic (SFP-type) | 1        | Requires 750-8211-001 |
| 100BASE-FX, LC, Fiber Optic (SFP-type) | 750-8211-012 | 100BASE-FX, LC, Fiber Optic (SFP-type) | 1        | Requires 750-8211-001 |
| 100BASE-FX, LC, Fiber Optic (SFP-type) | 750-8211-013 | 100BASE-FX, LC, Fiber Optic (SFP-type) | 1        | Requires 750-8211-001 |
| 100BASE-FX, LC, Fiber Optic (SFP-type) | 750-8211-014 | 100BASE-FX, LC, Fiber Optic (SFP-type) | 1        | Requires 750-8211-001 |
| 100BASE-FX, LC, Fiber Optic (SFP-type) | 750-8211-015 | 100BASE-FX, LC, Fiber Optic (SFP-type) | 1        | Requires 750-8211-001 |
| 100BASE-FX, LC, Fiber Optic (SFP-type) | 750-8211-016 | 100BASE-FX, LC, Fiber Optic (SFP-type) | 1        | Requires 750-8211-001 |
| 100BASE-FX, LC, Fiber Optic (SFP-type) | 750-8211-017 | 100BASE-FX, LC, Fiber Optic (SFP-type) | 1        | Requires 750-8211-001 |
| 100BASE-FX, LC, Fiber Optic (SFP-type) | 750-8211-018 | 100BASE-FX, LC, Fiber Optic (SFP-type) | 1        | Requires 750-8211-001 |
| 100BASE-FX, LC, Fiber Optic (SFP-type) | 750-8211-019 | 100BASE-FX, LC, Fiber Optic (SFP-type) | 1        | Requires 750-8211-001 |
| 100BASE-FX, LC, Fiber Optic (SFP-type) | 750-8211-020 | 100BASE-FX, LC, Fiber Optic (SFP-type) | 1        | Requires 750-8211-001 |



The PFC200 Controller is a compact PLC for the modular WAGO I/O System. Besides network and fieldbus interfaces, the controller supports all digital, analog and specialty modules found within the 750/753 Series.

Two ETHERNET interfaces and two SFP ports enable line topology wiring.

An integrated Webserver provides user configuration options, while displaying PFC200 status information.

Besides the processing industry and building automation, typical applications for the PFC200 include standard machinery and equipment control (e.g., packaging, bottling and manufacturing systems, as well as textile, metal and wood processing machines).

**Advantages:**

- Programming per IEC 61131-3
- Programmable with CODESYS V3.5 from Firmware Release 23, WAGO-I/O-PRO V2.3 or **e!COCKPIT** up to Firmware Release 22
- Direct connection of WAGO's I/O modules
- 2 x ETHERNET, 2 x SFP port
- Linux® operating system with RT-Preempt patch
- Configuration via CODESYS, **e!COCKPIT** or Web-Based Management user interface
- Maintenance-free

**Technical data**

| Communication | Modbus TCP master/slave<br>Modbus (UDP), WagoAppPlcModbus Library<br>Modbus (RTU), WagoAppPlcModbus Library<br>ETHERNET<br>EtherNet/IP™ Adapter (slave)<br>EtherNet/IP™ Scanner<br>EtherCAT® Master<br>OPC UA Server/Client<br>OPC UA Pub/Sub (can be installed later)<br>MQTT<br>BACnet/IP, <b>requires an additional license</b><br>Telecontrol protocols, <b>requires an additional license</b> |
|---------------|----------------------------------------------------------------------------------------------------------------------------------------------------------------------------------------------------------------------------------------------------------------------------------------------------------------------------------------------------------------------------------------------------|
|---------------|----------------------------------------------------------------------------------------------------------------------------------------------------------------------------------------------------------------------------------------------------------------------------------------------------------------------------------------------------------------------------------------------------|

## Technical data

|                                                   |                                                                                                                                                                                                                          |
|---------------------------------------------------|--------------------------------------------------------------------------------------------------------------------------------------------------------------------------------------------------------------------------|
| ETHERNET protocols                                | DHCP<br>DNS<br>NTP<br>FTP<br>FTPS<br>SNMP<br>HTTP<br>HTTPS<br>SSH                                                                                                                                                        |
| Telecontrol protocols                             | IEC 60870 (additional license as slave or master)<br>IEC 61850 (additional license as Client or Server)<br>DNP3 (additional license as Slave or Master)                                                                  |
| Visualization                                     | Web-Visu                                                                                                                                                                                                                 |
| Operating system                                  | Real-time Linux (with RT-Preempt patch)                                                                                                                                                                                  |
| CPU                                               | Cortex A8; 1 GHz                                                                                                                                                                                                         |
| Programming languages per IEC 61131-3             | Instruction List (IL)<br>Ladder Diagram (LD)<br>Function Block Diagram (FBD)<br>Continuous Function Chart (CFC)<br>Structured Text (ST)<br>Sequential Function Chart (SFC)                                               |
| Programming environment                           | CODESYS V3.5, Firmware Release 23 or higher<br><b>e!</b> COCKPIT (based on CODESYS V3) up to Firmware Release 22<br>WAGO-I/O-PRO V2.3 (based on CODESYS V2.3), up to Firmware Release 22                                 |
| Configuration options                             | CODESYS V3<br><b>e!</b> COCKPIT<br>WAGO-I/O-CHECK<br>Web-Based Management<br><b>e!</b> RUNTIME library<br>CODESYS Library                                                                                                |
| Baud rate (communication/fieldbus 1)              | 10/100 Mbit/s                                                                                                                                                                                                            |
| Baud rate                                         | ETHERNET: 10/100 Mbit/s                                                                                                                                                                                                  |
| Transmission medium (communication/fieldbus)      | ETHERNET: Twisted pair S-UTP; 100 Ω; Cat. 5; 100 m maximum cable length;                                                                                                                                                 |
| Main memory (RAM)                                 | 512 MB                                                                                                                                                                                                                   |
| Internal memory (flash)                           | 4096 MB                                                                                                                                                                                                                  |
| Non-volatile hardware memory                      | 128 KB                                                                                                                                                                                                                   |
| Program memory                                    | CODESYS V2: 16 MB; CODESYS V3: 32 MB                                                                                                                                                                                     |
| Data memory                                       | CODESYS V2: 64 MB; CODESYS V3: 128 MB                                                                                                                                                                                    |
| Non-volatile software memory                      | 128 KB<br>128 KB                                                                                                                                                                                                         |
| Type of memory card                               | SD and SDHC up to 32 GB (all guaranteed properties only valid with WAGO's memory card)                                                                                                                                   |
| Memory card slot                                  | Push-push mechanism; cover lid (sealable)                                                                                                                                                                                |
| Number of modules per node (max.)                 | 250                                                                                                                                                                                                                      |
| Number of modules without a bus extension (max.)  | 64                                                                                                                                                                                                                       |
| Input and output process image (internal) max.    | 1000 words/1000 words                                                                                                                                                                                                    |
| Input and output process image (Modbus®) max.     | CODESYS V2: 1000 words/1000 words; CODESYS V3: 32000 words/32000 words                                                                                                                                                   |
| Indicators                                        | LED (SYS, RUN, I/O, U1 ... U7) red/green/orange: Status of system, program, local data bus, status programmable by user (can be used via CODESYS library); LED (A, C) green: Status of system power supply, field supply |
| Supply voltage (system)                           | 24 VDC (-25 ... +30 %); via pluggable connector (CAGE CLAMP® connection)                                                                                                                                                 |
| Input current (typ.) at nominal load (24 V)       | 550 mA                                                                                                                                                                                                                   |
| Total current (system supply)                     | 1700 mA                                                                                                                                                                                                                  |
| Supply voltage (field)                            | 24 VDC (-25 ... +30 %); via power jumper contacts                                                                                                                                                                        |
| Current carrying capacity (power jumper contacts) | 10 A                                                                                                                                                                                                                     |
| Number of outgoing power jumper contacts          | 3                                                                                                                                                                                                                        |
| Isolation                                         | 500 V system/field                                                                                                                                                                                                       |

### Connection data

|                                               |                                                                                                  |
|-----------------------------------------------|--------------------------------------------------------------------------------------------------|
| Connection technology: communication/fieldbus | Modbus (TCP, UDP): 2 x RJ-45; 2 x SFP slots (e.g., with SFP module and LC fiber-optic connector) |
| Connection technology: system supply          | 2 x CAGE CLAMP®                                                                                  |
| Connection technology: field supply           | 6 x CAGE CLAMP®                                                                                  |
| Connection type 1                             | System/field supply                                                                              |
| Solid conductor                               | 0.08 ... 2.5 mm <sup>2</sup> / 28 ... 14 AWG                                                     |
| Fine-stranded conductor                       | 0.08 ... 2.5 mm <sup>2</sup> / 28 ... 14 AWG                                                     |
| Strip length                                  | 8 ... 9 mm / 0.31 ... 0.35 inches                                                                |
| Connection technology: device configuration   | 1 x Male connector; 4-pole                                                                       |

### Physical data

|                                   |                        |
|-----------------------------------|------------------------|
| Width                             | 78.6 mm / 3.094 inches |
| Height                            | 100 mm / 3.937 inches  |
| Depth                             | 71.9 mm / 2.831 inches |
| Depth from upper-edge of DIN-rail | 64.7 mm / 2.547 inches |

### Mechanical data

|                    |                              |
|--------------------|------------------------------|
| Weight             | 332.5 g                      |
| Housing material   | Polycarbonate; polyamide 6.6 |
| Conformity marking | CE                           |

### Environmental requirements

|                                                                                    |                                                                                                                     |
|------------------------------------------------------------------------------------|---------------------------------------------------------------------------------------------------------------------|
| Ambient temperature (operation)                                                    | 0 ... +55 °C                                                                                                        |
| Ambient temperature (storage)                                                      | -25 ... +85 °C                                                                                                      |
| Protection type                                                                    | IP20                                                                                                                |
| Pollution degree                                                                   | 2 per IEC 61131-2                                                                                                   |
| Operating altitude                                                                 | without temperature derating: 0 ... 2000 m; with temperature derating: 2000 ... 5000 m (0.5 K/100 m); 5000 m (max.) |
| Relative humidity (without condensation)                                           | 95 %                                                                                                                |
| Mounting position                                                                  | any                                                                                                                 |
| Mounting type                                                                      | DIN-35 rail                                                                                                         |
| Shock resistance                                                                   | 15g per IEC 60068-2-27                                                                                              |
| EMC immunity to interference                                                       | per EN 61000-6-2, marine applications                                                                               |
| EMC emission of interference                                                       | per EN 61000-6-3, marine applications                                                                               |
| Exposure to pollutants                                                             | per IEC 60068-2-42 and IEC 60068-2-43                                                                               |
| Fire load                                                                          | 2.544 MJ                                                                                                            |
| Permissible H <sub>2</sub> S contaminant concentration at a relative humidity 75 % | 10 ppm                                                                                                              |
| Permissible SO <sub>2</sub> contaminant concentration at a relative humidity 75 %  | 25 ppm                                                                                                              |

### Commercial data

|                       |               |
|-----------------------|---------------|
| ETIM 8.0              | EC000236      |
| ETIM 7.0              | EC000236      |
| PU (SPU)              | 1 pcs         |
| Packaging type        | Box           |
| Country of origin     | DE            |
| GTIN                  | 4066966100921 |
| Customs tariff number | 85371091990   |

**Environmental Product Compliance**

|                        |                                   |
|------------------------|-----------------------------------|
| RoHS Compliance Status | Compliant,With Exemption          |
| RoHS Exemption         | 6(c)<br>7(a)<br>7(c)-I<br>7(c)-II |

**Approvals / Certificates**


**General approvals** **Declarations of conformity and manufacturer's declarations**



| Approval                                                          | Standard               | Certificate Name                |
|-------------------------------------------------------------------|------------------------|---------------------------------|
| EAC<br>Brjansker Zertifizierungs-<br>stelle                       | TP TC 020/2011         | EAC RU C-DE.AM02.<br>B.00087/19 |
| KC<br>National Radio Research<br>Agency                           | Article 58-2, Clause 3 | MSIP-REM-W43-PFC750             |
| UL<br>Underwriters Laboratories<br>Inc. (ORDINARY LOCATI-<br>ONS) | -                      | E175199                         |

| Approval                                                | Standard | Certificate Name |
|---------------------------------------------------------|----------|------------------|
| EU-Declaration of Confor-<br>mity<br>WAGO GmbH & Co. KG | -        | -                |


**Approvals for marine applications**



| Approval                                                       | Standard                           | Certificate Name  |
|----------------------------------------------------------------|------------------------------------|-------------------|
| BSH<br>Bundesamt fuer See-<br>schiffahrt und Hydrogra-<br>phie | -                                  | 1104              |
| BV<br>Bureau Veritas S.A.                                      | Rules for class. of Steel<br>Ships | 66711/A0          |
| DNV<br>DNV GL SE                                               | DNV-CG-0339,Aug.2021               | TAA0000194        |
| KR<br>Korean Register of Ship-<br>ping                         | -                                  | KR HMB05880-AC001 |

**Downloads**

**Environmental Product Compliance**

|                                                                                                                                  |
|----------------------------------------------------------------------------------------------------------------------------------|
| <b>Compliance Search</b>                                                                                                         |
| Environmental Product<br>Compliance 750-8211  |

## Documentation

| Manual                                                      |                               |                   |                   | System Description                                 |                  |                   |
|-------------------------------------------------------------|-------------------------------|-------------------|-------------------|----------------------------------------------------|------------------|-------------------|
| Product Manual PFC200; G2; 2ETH 2SFP                        | V 1.7.0 / FW 25<br>23.06.2023 | pdf<br>3992.98 KB | <a href="#">↓</a> | Overview on WAGO-I/O-SYSTEM 750 approvals          | pdf<br>770.48 KB | <a href="#">↓</a> |
| System Manual WAGO I/O System 750/753                       | V 3.3.3<br>29.08.2023         | pdf<br>8512.61 KB | <a href="#">↓</a> | Controller PFC100/200, General Product Information | pdf<br>578.66 KB | <a href="#">↓</a> |
| System Manual Series 750/753                                |                               |                   | <a href="#">↓</a> |                                                    |                  |                   |
| Product Manual OPC UA Mapping Editor                        | V 1.1.0<br>11.03.2022         | pdf<br>3314.23 KB | <a href="#">↓</a> |                                                    |                  |                   |
| OPC-UA Mapping Editor                                       |                               |                   | <a href="#">↓</a> |                                                    |                  |                   |
| Migration Guide                                             | V 1.3.0<br>03.07.2023         | pdf<br>4938.74 KB | <a href="#">↓</a> |                                                    |                  |                   |
| Migrationsleitfaden von e!COCKPIT-Projekten zu CODESYS V3.5 |                               |                   | <a href="#">↓</a> |                                                    |                  |                   |

## Additional Information

|                    |                       |                   |                   |
|--------------------|-----------------------|-------------------|-------------------|
| WAGO OPC UA Server | V 1.1.0<br>28.01.2021 | pdf<br>1132.87 KB | <a href="#">↓</a> |
|--------------------|-----------------------|-------------------|-------------------|

## Bid Text

|                          |                   |
|--------------------------|-------------------|
| ausschreiben.de 750-8211 | <a href="#">↓</a> |
|--------------------------|-------------------|

## CAD/CAE-Data

| CAD data              | CAE data                   |
|-----------------------|----------------------------|
| 2D/3D Models 750-8211 | EPLAN Data Portal 750-8211 |
| <a href="#">↓</a>     | <a href="#">↓</a>          |
|                       | ZUKEN Portal 750-8211      |
|                       | <a href="#">↓</a>          |

## Engineering-Software

| Configuration and Commissioning Software                    |                           |                     |                   |
|-------------------------------------------------------------|---------------------------|---------------------|-------------------|
| WAGO-IO-PRO Demo-Version (759-912) / Serie 750, 758 und 762 | V 2.3.9.68<br>17.02.2022  | zip<br>122524.17 KB | <a href="#">↓</a> |
| (759-316) WAGO Ethernet Settings / Serie 750                | 06.18.01.01<br>02.09.2021 | zip<br>26678.54 KB  | <a href="#">↓</a> |
| WAGUpload                                                   | 1.16.1.0<br>02.02.2022    | zip<br>12111.45 KB  | <a href="#">↓</a> |

## Runtime Software

| Firmware                                                         |                        |                     |  |
|------------------------------------------------------------------|------------------------|---------------------|--|
| Image Update (SD Karte) PFC100/200 für Codesys V2.3 u. Elcockpit | V 22 SP1<br>12.12.2022 | zip<br>205815.20 KB |  |
| PFC200, Firmware Update für CoDeSys V3.5                         | V 23<br>24.02.2023     | zip<br>167985.38 KB |  |
| WUP Update (WAGOuploadTool) PFC100/200 Codesys V2,3 u. Elcockpit | V 22 SP1<br>12.12.2022 | zip<br>203580.70 KB |  |

## 1 Compatible Products

### 1.1 Optional Accessories

#### 1.1.1 Cables and connectors

##### 1.1.1.1 Connector plug



**Item No.: 750-979/000-011**  
Connector ETHERNET; RJ-45; Cat. 6A; angled; Code T568A; AWG 22; Strain relief



**Item No.: 750-979/000-021**  
Connector ETHERNET; RJ-45; Cat. 6A; angled; Code T568A; AWG 24; Strain relief



**Item No.: 750-979/000-012**  
Connector ETHERNET; RJ-45; Cat. 6A; angled; Code T568B; AWG 22; Strain relief



**Item No.: 750-979/000-022**  
Connector ETHERNET; RJ-45; Cat. 6A; angled; Code T568B; AWG 24; Strain relief



**Item No.: 750-977/000-011**  
Connector ETHERNET; RJ-45; Cat. 6A; straight; Code T568A; AWG 22



**Item No.: 750-978/000-011**  
Connector ETHERNET; RJ-45; Cat. 6A; straight; Code T568A; AWG 22; Strain relief



**Item No.: 750-977/000-021**  
Connector ETHERNET; RJ-45; Cat. 6A; straight; Code T568A; AWG 24



**Item No.: 750-978/000-021**  
Connector ETHERNET; RJ-45; Cat. 6A; straight; Code T568A; AWG 24; Strain relief



**Item No.: 750-977/000-012**  
Connector ETHERNET; RJ-45; Cat. 6A; straight; Code T568B; AWG 22



**Item No.: 750-978/000-012**  
Connector ETHERNET; RJ-45; Cat. 6A; straight; Code T568B; AWG 22; Strain relief



**Item No.: 750-977/000-022**  
Connector ETHERNET; RJ-45; Cat. 6A; straight; Code T568B; AWG 24



**Item No.: 750-978/000-022**  
Connector ETHERNET; RJ-45; Cat. 6A; straight; Code T568B; AWG 24; Strain relief



**Item No.: 750-975**  
ETHERNET RJ-45 connector, IP20; ETHERNET 10/100 Mbit/s; for field assembly

### 1.1.2 Communication

#### 1.1.2.1 Communication cable



**Item No.: 750-923**  
Configuration cable; USB connector; Length: 2.5 m



**Item No.: 750-923/000-001**  
Configuration cable; USB connector; Length: 5 m

1.1.3 DIN-rail

1.1.3.1 Mounting accessories



**Item No.: 210-196**  
Aluminum carrier rail; 35 x 8.2 mm; 1.6 mm thick; 2 m long; unslotted; similar to EN 60715; silver-colored



**Item No.: 210-198**  
Copper carrier rail; 35 x 15 mm; 2.3 mm thick; 2 m long; unslotted; according to EN 60715; copper-colored



**Item No.: 210-508**  
Steel carrier rail; 35 x 15 mm; 1.5 mm thick; 2 m long; slotted; galvanized; similar to EN 60715; silver-colored



**Item No.: 210-197**  
Steel carrier rail; 35 x 15 mm; 1.5 mm thick; 2 m long; slotted; similar to EN 60715; silver-colored



**Item No.: 210-506**  
Steel carrier rail; 35 x 15 mm; 1.5 mm thick; 2 m long; unslotted; galvanized; similar to EN 60715; silver-colored



**Item No.: 210-114**  
Steel carrier rail; 35 x 15 mm; 1.5 mm thick; 2 m long; unslotted; similar to EN 60715; silver-colored



**Item No.: 210-118**  
Steel carrier rail; 35 x 15 mm; 2.3 mm thick; 2 m long; unslotted; according to EN 60715; silver-colored



**Item No.: 210-115**  
Steel carrier rail; 35 x 7.5 mm; 1 mm thick; 2 m long; slotted; according to EN 60715; "Hole width 18 mm; silver-colored



**Item No.: 210-112**  
Steel carrier rail; 35 x 7.5 mm; 1 mm thick; 2 m long; slotted; according to EN 60715; "Hole width 25 mm; silver-colored



**Item No.: 210-504**  
Steel carrier rail; 35 x 7.5 mm; 1 mm thick; 2 m long; slotted; galvanized; according to EN 60715; silver-colored



**Item No.: 210-113**  
Steel carrier rail; 35 x 7.5 mm; 1 mm thick; 2 m long; unslotted; according to EN 60715; silver-colored



**Item No.: 210-505**  
Steel carrier rail; 35 x 7.5 mm; 1 mm thick; 2 m long; unslotted; galvanized; according to EN 60715; silver-colored

1.1.4 Marking

1.1.4.1 Group marker carrier



**Item No.: 750-107**  
Group marker carrier

1.1.4.2 Marker



**Item No.: 2009-145/000-006**  
Mini-WSB Inline; for Smart Printer; 1700 pieces on roll; stretchable 5 - 5.2 mm; plain; snap-on type; blue



**Item No.: 2009-145/000-007**  
Mini-WSB Inline; for Smart Printer; 1700 pieces on roll; stretchable 5 - 5.2 mm; plain; snap-on type; gray



**Item No.: 2009-145/000-023**  
Mini-WSB Inline; for Smart Printer; 1700 pieces on roll; stretchable 5 - 5.2 mm; plain; snap-on type; green



**Item No.: 2009-145/000-012**  
Mini-WSB Inline; for Smart Printer; 1700 pieces on roll; stretchable 5 - 5.2 mm; plain; snap-on type; orange



**Item No.: 2009-145/000-005**  
Mini-WSB Inline; for Smart Printer; 1700 pieces on roll; stretchable 5 - 5.2 mm; plain; snap-on type; red



**Item No.: 2009-145/000-024**  
Mini-WSB Inline; for Smart Printer; 1700 pieces on roll; stretchable 5 - 5.2 mm; plain; snap-on type; violet



**Item No.: 2009-145**  
Mini-WSB Inline; for Smart Printer; 1700 pieces on roll; stretchable 5 - 5.2 mm; plain; snap-on type; white



**Item No.: 2009-145/000-002**  
Mini-WSB Inline; for Smart Printer; 1700 pieces on roll; stretchable 5 - 5.2 mm; plain; snap-on type; yellow



**Item No.: 248-501/000-006**  
Mini-WSB marking card; as card; not stretchable; plain; snap-on type; blue



**Item No.: 248-501/000-007**  
Mini-WSB marking card; as card; not stretchable; plain; snap-on type; gray



**Item No.: 248-501/000-023**  
Mini-WSB marking card; as card; not stretchable; plain; snap-on type; green



**Item No.: 248-501/000-017**  
Mini-WSB marking card; as card; not stretchable; plain; snap-on type; light green



**Item No.: 248-501/000-012**  
Mini-WSB marking card; as card; not stretchable; plain; snap-on type; orange



**Item No.: 248-501/000-005**  
Mini-WSB marking card; as card; not stretchable; plain; snap-on type; red



**Item No.: 248-501/000-024**  
Mini-WSB marking card; as card; not stretchable; plain; snap-on type; violet



**Item No.: 248-501**  
Mini-WSB marking card; as card; not stretchable; plain; snap-on type; white



**Item No.: 248-501/000-002**  
Mini-WSB marking card; as card; not stretchable; plain; snap-on type; yellow

1.1.4.3 Marker carrier



**Item No.: 750-103**  
Group marker carrier

1.1.5 Memory card

1.1.5.1 Memory card



**Item No.: 758-879/000-2108**  
Memory Card SD; pSLC-NAND; 8 GB;  
Temperature range: -40 to 90°C



**Item No.: 758-879/000-001**  
Memory Card SD; SLC-NAND; 2 GByte;  
Temperature from -40 to 90 °C

1.1.6 Plug

1.1.6.1 SFP module



**Item No.: 852-202**  
SFP Module 100BASE; FX Multi-Mode  
1310 nm LC; 2 km; DDM; Extreme; silver-  
colored

1.1.7 Shield termination

1.1.7.1 Shield clamping saddles



**Item No.: 790-108**  
Shield clamping saddle; 11 mm wide; dia-  
meter of compatible conductor; 3 ... 8 mm



**Item No.: 790-208**  
Shield clamping saddle; 12.4 mm wide;  
3 ... 8 mm



**Item No.: 790-116**  
Shield clamping saddle; 19 mm wide; dia-  
meter of compatible conductor; 7 ... 16  
mm



**Item No.: 790-216**  
Shield clamping saddle; 21.8 mm wide;  
6 ... 16 mm



**Item No.: 790-124**  
Shield clamping saddle; 27 mm wide; dia-  
meter of compatible conductor; 6 ... 24  
mm



**Item No.: 790-220**  
Shield clamping saddle; 30 mm wide; 6 ...  
20 mm



**Item No.: 790-140**  
Shield clamping saddle; diameter of com-  
patible conductor

1.1.8 Software

1.1.8.1 Basic version



**Item No.: 2759-101/1110-4000**  
e!COCKPIT; Buy-out License



**Item No.: 2759-101/1110-2005**  
e!COCKPIT; Multi-User License; 05 pcs



**Item No.: 2759-101/1110-2010**  
e!COCKPIT; Multi-User License; 10 pcs



**Item No.: 2759-101/1110-2015**  
e!COCKPIT; Multi-User License; 15 pcs



**Item No.: 2759-101/1110-2020**  
e!COCKPIT; Multi-User License; 20 pcs



**Item No.: 2759-101/1110-3000**  
e!COCKPIT; Site License



**Item No.: 2759-101/1110-2002**  
e!COCKPIT; Workstation License



**Item No.: 759-333**  
WAGO-I/O-PRO



**Item No.: 759-333/000-923**  
WAGO-I/O-PRO; USB-Set



1.1.8.2 Software application



**Item No.: 2759-2015/260-1000**  
Application Grid Gateway; Single License

**Item No.: 2759-2015/261-1000**  
Application Grid Gateway; Single License;  
Online activation

1.1.9 System enclosure

1.1.9.1 System enclosure



**Item No.: 850-825**  
IP65 enclosure; Aluminium (RAL 7032);  
WxHxD (160x100x160 mm); 9 x M12, 4 x  
M20



**Item No.: 850-826**  
IP65 enclosure; Aluminium (RAL 7032);  
WxHxD (240x100x160 mm); 4 x M20, 4 x  
M16, 14 x M12 cable grip



**Item No.: 850-827**  
IP65 enclosure; Aluminium (RAL 7032);  
WxHxD (320x100x160 mm); 4 x M20, 8 x  
M16, 17 x M12 cable grip



**Item No.: 850-828**  
IP65 enclosure; Aluminium (RAL 7032);  
WxHxD (480x100x160 mm); 4 x M20, 10 x  
M16, 35 x M12 cable grip



**Item No.: 850-826/002-000**  
IP65 enclosure; Aluminium (RAL 7035);  
WxHxD (240x100x160 mm); 4 x M20, 4 x  
M16, 14 x M12 cable grip



**Item No.: 850-827/002-000**  
IP65 enclosure; Aluminium (RAL 7035);  
WxHxD (320x100x160 mm); 4 x M20, 8 x  
M16, 17 x M12 cable grip



**Item No.: 850-828/002-000**  
IP65 enclosure; Aluminium (RAL 7035);  
WxHxD (480x100x160 mm); 4 x M20, 10 x  
M16, 35 x M12 cable grip



**Item No.: 850-834**  
IP65 enclosure; Polyester (RAL 7032); Wx-  
HxD (164x100x164 mm); 9 x M12, 4 x M20



**Item No.: 850-835**  
IP65 enclosure; Polyester (RAL 7032); Wx-  
HxD (244x100x164 mm); 4 x M20, 4 x  
M16, 14 x M12 cable grip



**Item No.: 850-836**  
IP65 enclosure; Polyester (RAL 7032);  
WxHxD (324x100x164 mm); 4 x M20, 8 x  
M16, 17 x M12 cable grip



**Item No.: 850-814/002-000**  
IP65 enclosure; Sheet steel (RAL 7035);  
WxHxD (200x120x200 mm); without flan-  
ge plate



**Item No.: 850-815/002-000**  
IP65 enclosure; Sheet steel (RAL 7035);  
WxHxD (300x120x200 mm); without flan-  
ge plate



**Item No.: 850-816/002-000**  
IP65 enclosure; Sheet steel (RAL 7035);  
WxHxD (400x120x200 mm); without flan-  
ge plate



**Item No.: 850-817/002-000**  
IP65 enclosure; Sheet steel (RAL 7035);  
WxHxD (600x120x200 mm); without flan-  
ge plate