

Fixing elements for weld studs

SB-Series

Many industries (but specifically the automotive market) are using weld studs as the standard method of attaching components. Simply hammered onto the stud these parts provide ideal fixing bases for attaching cables, pipes or hose.

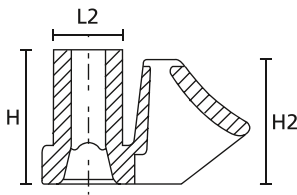
The use of weld studs avoids the problems with holes (ingress of moisture, corrosion etc).

Features and benefits

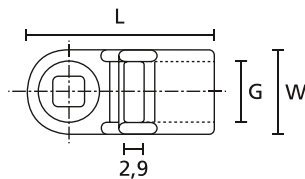
- Simple and quick method of fixing
- SBH types simply hammered onto the stud
- SBH1 and SBH3 allow cables to run across the panel
- SBH2 allow cables to run at 90° to the panel



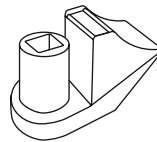
SBH2 allow cables to run at 90° to the panel.



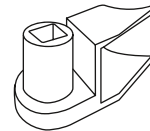
SBH1, SBH3



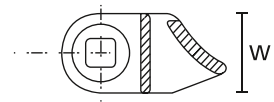
SBH1, SBH3



SBH1, SBH3



SBH2



SBH2

TYPE	Width (W)	Length (L)	Length (L2)	Height (H)	Height (H2)	Stud Ø	Strap Width max. (G)	Material	Colour	Article-No.
SBH1	12.5	26.8	9.0	13.9	15.9	5.0	8.5	PA66	Black (BK)	151-02260
SBH3	12.5	26.8	9.0	18.0	15.9	5.0	8.5	PA66	Black (BK)	151-02279
SBH2	12.5	26.8	9.0	14.0	12.5	5.0	8.5	PA66	Black (BK)	151-26250

All dimensions in mm. Subject to technical changes.

Fixing elements for weld studs

CT-Series

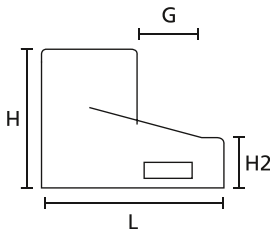
In areas with limited space these mounting bases allow the cable to be slightly offset from the fixing stud, and can be installed in the equipment prior to the cable installation. A major cost saving can be made using these products as they will allow the use of many different sizes of standard cable ties without the need to stock a wide range of specific fixing ties.

Features and benefits

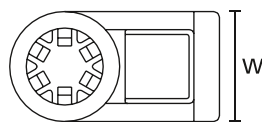
- Ideal for cable ties up to 4.8 mm wide
- Simply pushed by hand onto an ISO or Fir Tree stud



Fixing Element CTM55 allows bundles to be routed alongside the stud.



CTM55



CTM55

TYPE	Width (W)	Length (L)	Height (H)	Height (H2)	Stud Ø	Strap Width max. (G)	Material	Colour	Article-No.
CTM55	10.0	19.0	14.5	5.3	5.0	5.0	PA66	Black (BK)	151-03301

All dimensions in mm. Subject to technical changes.



Material Specification Overview

MATERIAL	Material Shortcut	Operating Temperature	Colour**	Flammability	Material Properties*	Material Specifications
Aluminium alloy	AL	-40 °C to +180 °C	Natural (NA)		<ul style="list-style-type: none"> Corrosion resistant Antimagnetic 	RoHS
Chloroprene Rubber	CR	-20 °C to +80 °C	Black (BK)		<ul style="list-style-type: none"> Weather resistant High yield strength 	RoHS
Ethylene Tetrafluoroethylene (Tefzel®)	E/TFE	-80 °C to +170 °C	Blue (BU)	UL 94 V0	<ul style="list-style-type: none"> Resistance to radioactivity UV resistant, not moisture sensitive Good chemical resistance to acids, bases, oxidizing agents 	RoHS
Polyacetal	POM	-40 °C to +90 °C, (+110 °C, 500 h)	Natural (NA)	UL 94 HB	<ul style="list-style-type: none"> Limited brittleness sensitivity Flexible at low temperature Not moisture sensitive Robust on impact 	RoHS
Polyamide 11	PA11	-40 °C to +85 °C, (+105 °C, 500 h)	Black (BK)	UL 94 HB	<ul style="list-style-type: none"> Bio-plastic, derived from vegetable oil Strong impact resistance at low temperature Very low moisture absorption Weather resistant Good chemical resistance 	HF RoHS
Polyamide 12	PA12	-40 °C to +85 °C, (+105 °C, 500 h)	Black (BK)	UL 94 HB	<ul style="list-style-type: none"> Good chemical resistance to acids, bases, oxidizing agents UV resistant 	HF RoHS
Polyamide 4.6	PA46	-40 °C to +130 °C, (+150 °C, 5000 h; +195 °C, 500 h)	Natural (NA), Grey (GY)	UL 94 V2	<ul style="list-style-type: none"> Resistance to high temperatures Very moisture sensitive Low smoke sensitivity 	HF LFH RoHS
Polyamide 6	PA6	-40 °C to +80 °C	Black (BK)	UL 94 V2	<ul style="list-style-type: none"> High yield strength 	RoHS
Polyamide 6, high impact modified	PA6HIR	-40 °C to +80 °C	Black (BK)	UL 94 HB	<ul style="list-style-type: none"> Limited brittleness sensitivity Higher flexibility at low temperature 	RoHS
Polyamide 6.6	PA66	-40 °C to +85 °C, (+105 °C, 500 h)	Black (BK), Natural (NA)	UL 94 V2	<ul style="list-style-type: none"> High yield strength 	HF RoHS
Polyamide 6.6, glass-fibre reinforced	PA66GF13	-40 °C to +105 °C	Black (BK)	UL 94 HB	<ul style="list-style-type: none"> Good resistance to lubricants, fuels, salt water and solvents 	HF RoHS
Polyamide 6.6, heat and UV-stabilised	PA66HSUV	-40 °C to +105 °C	Black (BK)	UL 94 V2	<ul style="list-style-type: none"> High yield strength Modified elevated maximum temperature UV resistant 	HF RoHS
Polyamide 6.6, heat stabilised	PA66HS	-40 °C to +105 °C	Black (BK), Natural (NA)	UL 94 V2	<ul style="list-style-type: none"> High yield strength Modified elevated maximum temperature 	HF RoHS
Polyamide 6.6, high impact modified	PA66HIR	-40 °C to +80 °C, (+105 °C, 500 h)	Black (BK)	UL 94 HB	<ul style="list-style-type: none"> Limited brittleness sensitivity Higher flexibility at low temperature 	RoHS
Polyamide 6.6, high impact modified, heat and UV-stabilised	PA66HIRHSUV	-40 °C to +110 °C	Black (BK)	UL 94 HB	<ul style="list-style-type: none"> Limited brittleness sensitivity Higher flexibility at low temperature Modified elevated maximum temperature High yield strength, UV resistant 	RoHS
Polyamide 6.6, high impact modified, heat stabilised	PA66HIRHS	-40 °C to +105 °C	Black (BK)	UL 94 HB	<ul style="list-style-type: none"> Limited brittleness sensitivity Higher flexibility at low temperature Modified elevated maximum temperature 	RoHS
Polyamide 6.6, high impact modified, scan black)	PA66HIR(S)	-40 °C to +80 °C, (+105 °C, 500 h)	Black (BK)	UL 94 HB	<ul style="list-style-type: none"> Limited brittleness sensitivity Higher flexibility at low temperature 	RoHS
Polyamide 6.6, UV-resistant	PA66W	-40 °C to +85 °C, (+105 °C, 500 h)	Black (BK)	UL 94 V2	<ul style="list-style-type: none"> High yield strength UV resistant 	HF RoHS

MATERIAL	Material Shortcut	Operating Temperature	Colour**	Flammability	Material Properties*	Material Specifications
Polyamide 6.6, with metal particles	PA66MP	-40 °C to +85 °C, (+105 °C, 500 h)	Blue (BU)	UL 94 HB	• High yield strength • Metal and X-Ray detectable	HF RoHS
Polyamide 6.6, with metal particles	PA66MP+	-40 °C to +85 °C	Blue (BU)	not flame retardant	• High yield strength • Metal and X-Ray detectable	HF RoHS
Polyamide 6.6 V0	PA66V0	-40 °C to +85 °C	White (WH)	UL 94 V0	• High yield strength • Low smoke emission	HF LFH RoHS
Polyester	SP	-50 °C to +150 °C	Black (BK)		• UV resistant • Good chemical resistance to most acids, bases and oils	HF LFH RoHS
Polyetheretherketone	PEEK	-55 °C to +240 °C	Beige (BGE)	UL 94 V0	• Resistance to radioactivity • Not moisture sensitive • Good chemical resistance to acids, bases, oxidising agents	HF LFH RoHS
Polyethylene	PE	-40 °C to +50 °C	Black (BK), Grey (GY)	UL 94 HB	• Low moisture absorption • Good chemical resistance to most acids, bases, alcohol, oils	HF RoHS
Polyolefin	PO	-40 °C to +90 °C	Black (BK)	UL 94 V0	• Low smoke emissions	HF LFH RoHS
Polypropylene	PP	-40 °C to +115 °C	Black (BK), Natural (NA)	UL 94 HB	• Floats in water • Moderate yield strength • Good chemical resistance to acids, bases and solvents	HF RoHS
Polypropylene, Ethylene Propylene Diene Terpolymer rubber free of Nitrosamine	PP, EPDM	-20 °C to +95 °C	Black (BK)	UL 94 HB	• Good resistance to high temperature • Good chemical and abrasion resistance	HF RoHS
Polypropylene with metal particles	PPMP	-40 °C to +115 °C	Blue (BU)	UL 94 HB	• Metal and X-Ray detectable • Heat resistant • Moderate yield strength • Good chemical resistance	RoHS
Polypropylene with metal particles	PPMP+	-40 °C to +85 °C	Blue (BU)	not flame retardant	• High yield strength • Metal and X-Ray detectable	HF RoHS
Polyvinylchloride	PVC	-10 °C to +70 °C	Black (BK), Natural (NA)	UL 94 V0	• Low moisture absorption • Good chemical resistance to acids, bases, salts, alcohol, oils	RoHS
Stainless Steel, Stainless Steel	SS304, SS316	-80 °C to +538 °C	Natural (NA)	non-burning	• Corrosion resistant • Antimagnetic • Weather resistant • Chemical resistance • SS316 also resistant against seawater, salt spray and anorganic acids	HF LFH RoHS
Thermoplastic Polyurethane	TPU	-40 °C to +85 °C	Black (BK)	UL 94 HB	• High elasticity • Good chemical resistance to acids, bases and oxidising agents	HF RoHS

Tefzel® is a registered trademark of DuPont. General linguistic usage for cable ties made from raw material E/TFE is Tefzel®-Tie. In addition to Tefzel® from DuPont HellermannTyton also uses equivalent E/TFE raw material from other suppliers.

**Further colours available on request.

*These details are only guide values. They should not be regarded as an exhaustive material specification and are no substitute for suitability tests. Please see our datasheets for further details.



Minimum Loop Tensile Strength
for Cable Ties (newton)

HF = Halogenfree

LFH = Limited Fire Hazard

RoHS = Restriction of Hazardous Substances