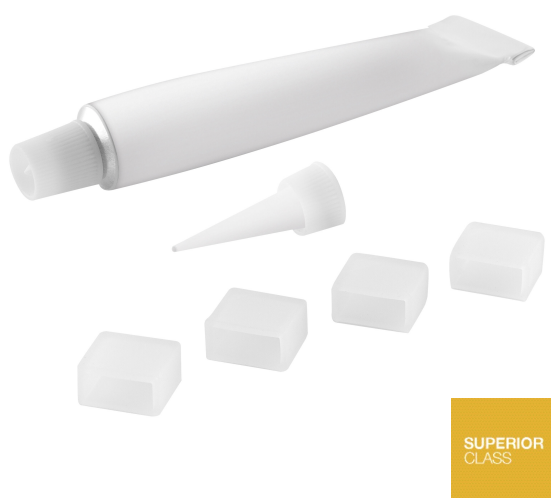


PRODUCT DATASHEET

LS AY SUP -12/SE/P SIL-SEAL

Connectors for TW LED Strips | Connectors for TW LED Strips



Areas of application

- General indoor illumination

Product benefits


- Easy installation of connector, no manual wiring required
- Tool-free installation

TECHNICAL DATA

Dimensions & Weight

Length	13.0 mm
Width	10.0 mm
Height	6.0 mm
Product weight	3.2 g

DOWNLOAD DATA

Documents and certificates	Document name
 Declarations of conformity	LS AY PFM_SUP_13/SE/P_12/SE/P_SIL-SEAL

LOGISTICAL DATA

Product code	Packaging unit (Pieces/Unit)	Dimensions (length x width x height)	Gross weight	Volume
4058075451568	BAG 4	80 mm x 120 mm x 5 mm	13.80 g	0.05 dm ³
4058075451575	Shipping box 200	180 mm x 100 mm x 180 mm	769.00 g	3.24 dm ³
4058075451582	Shipping box 2,000	520 mm x 380 mm x 210 mm	8457.00 g	41.50 dm ³

The mentioned product code describes the smallest quantity unit which can be ordered. One shipping unit can contain one or more single products. When placing an order, for the quantity please enter single or multiples of a shipping unit.

DISCLAIMER

Subject to change without notice. Errors and omission excepted. Always make sure to use the most recent release.
