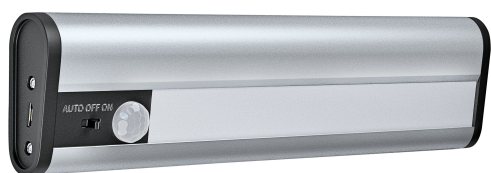


# PRODUCT DATASHEET

## Linear LED Mobile USB 200

Linear LED Mobile USB | Undercabinet luminaire for flexible mounting, with motion sensor, battery-powered, rechargeable



### Areas of application

- For a very large range of uses
- For indoor use only
- Shelves, furniture integration or under cabinet mounting

### Product benefits

- Attractive and functional design
- Economical operation due to low power consumption
- Easy and quick installation

### Product features

- Housing material: aluminum
- Integrated light and motion sensor
- Switch for Auto- or On/Off-Mode
- Battery rechargeable via USB cable



TECHNICAL DATA

Electrical data

Nominal wattage	1.00 W
Nominal voltage	5 V
Mains frequency	0 Hz
Nominal current	1000 mA
Max. number of luminaires per miniature circuit breaker C10	-
Protection class	III

Photometrical data

Luminous flux	69 lm
Luminous efficacy	69 lm/W
Color temperature	4000 K
Light color (designation)	Cool White
Color rendering index Ra	> 80
Standard deviation of color matching	≤6 sdc <sub>cm</sub>

Dimensions & Weight

Length	200.00 mm
Width	50.00 mm
Height	22.00 mm
Product weight	212.00 g



PG Linear LED Mobile USB 200  
MiPRC

Materials & Colors

Product color	Silver
Housing color	Silver
Body material	Aluminum
Mercury content	0.0 mg

## Application & Mounting

Ambient temperature range	-20...+40 °C
Temperature range at storage	-30...+70 °C
Type of protection	IP20
Dimmable	No
Mounting type	Surface
Mounting location	Cabinet undersides
Application environment	Indoor
With light source	Yes

## Lifespan

Lifespan L70/B50 at 25 °C	25000 h <sup>1)</sup>
---------------------------	-----------------------

<sup>1)</sup> t[h]: L70 / B50 @ 25 °C (Ta), t[h]: L80 / B10 @ 25 °C (Ta), t[h]: L90 / B10 @ 25 °C (Ta)

## Sensor

Type of sensor	Motion
Sensor technology	Passive infrared (PIR)

## BATTERY

Type of Battery	Lithium ion
Battery size [GMS]	18650
Number of included batteries	1
Nominal voltage of battery	3.7 V
Nominal capacity of battery	1800 mAh
Battery charging time	8 h

## Certificates & Standards

Standards	CE / EAC / UKCA
Luminaire with limited surface temperature, "D sign"	No
Replaceable light source (EPREL)	Not replaceable

## Additional product data



Number of illuminants	empty
-----------------------	-------

## Safety advice

- To reduce the risk of strangulation the flexible wiring connected to this luminaire shall be effectively fixed to the wall if the wiring is within arm's reach.

- This product is not a toy. It should not be left unattended in the hands of children or operated by children.
- Not designed as a replacement for conventional lighting in private household.
- Battery Warning: Keep out of reach for children. Swallowing can lead to chemical burns, perforation of soft tissue, and death. Severe burns can occur within 2 hours of ingestion. Seek medical attention immediately.
- If the battery compartment (if applicable) does not close securely, stop using the product and keep it away from children. If you think batteries might have been swallowed or placed inside any part of the body, seek immediate medical attention.
- Please avoid: Maximal ambient temperature: +35 °C. Replacement of a battery with an incorrect type that can defeat safeguard (for example, in the case of some lithium battery types). Altitude during operation: 2000 m. Disposal of a battery into fire or a hot oven, or mechanically crushing or cutting of a battery, that can result in an explosion.

## DOWNLOAD DATA

Documents and certificates		Document name
	Declarations of conformity	CE Declaration Linear LED Mobile USB
	Declarations of conformity UKCA	LINEARLED MOBILE

## LOGISTICAL DATA

Product code	Packaging unit (Pieces/Unit)	Dimensions (length x width x height)	Gross weight	Volume
4058075260436	Blister 1	23 mm x 140 mm x 400 mm	251.00 g	1.29 dm <sup>3</sup>
4058075260443	Shipping box 6	413 mm x 161 mm x 158 mm	1670.00 g	10.51 dm <sup>3</sup>
4058075260450	Shipping box 36	500 mm x 430 mm x 330 mm	10599.00 g	70.95 dm <sup>3</sup>

The mentioned product code describes the smallest quantity unit which can be ordered. One shipping unit can contain one or more single products. When placing an order, for the quantity please enter single or multiples of a shipping unit.

## DISCLAIMER

Subject to change without notice. Errors and omission excepted. Always make sure to use the most recent release.