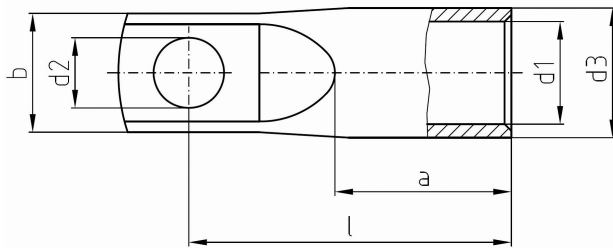


*intercable*

## Datasheet Kabelschoen 185mm<sup>2</sup> M16



<b>Artikelnummer</b>	ICF18516S
<b>Doorsnede Kabel</b>	185 mm <sup>2</sup>
<b>Gatmaat</b>	M16
<b>Materiaal</b>	CU-HCP 99,95% vlgns DIN EN 13600
<b>Afwerking</b>	Galvanisch vertind

### Maten:

<b>D1</b>	21 mm
<b>D3</b>	26 mm
<b>D2</b>	17 mm
<b>B</b>	30 mm
<b>L</b>	68 mm
<b>A</b>	35 mm
<b>Gewicht</b>	11.76 kg/100