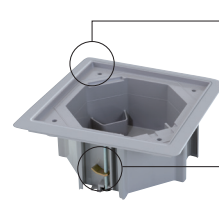
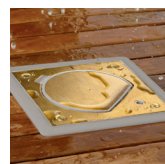


For installation on raised floors, wooden platforms, parquet...



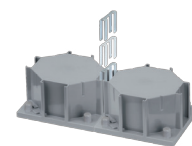
The bevelled frame design secures the tray over the floor and conceals any possible installation defects

The fastening claws ensure the tray fastening

Possibility of grouping them around the whole tray perimeter to give several connection points.

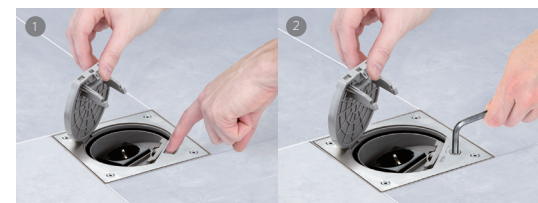


Allows flush-mounting installation in all types of flooring



Grouping of watertight floor boxes

ONE MECHANISM-HOLDER FOR EVERY ENVIRONMENT for every environment

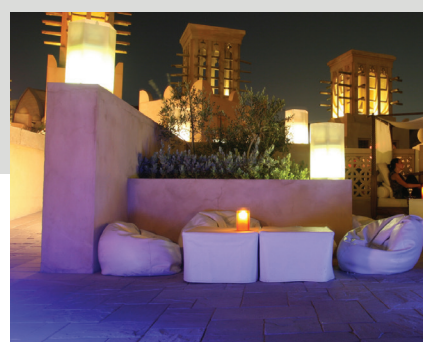


- 1 **Manual closure**
Suitable for low demanding environments
- 2 **Safety lock**
Ideal to restrict the access to the connections in commercial buildings

WATERTIGHT FLOOR BOX for installation in raised flooring



WATERTIGHT FLOOR BOX for installation in concrete flooring



simon
LIGHT UP EMOTIONS

www.simonelectric.com



SIMON, S.A.U.
Diputación, 390-392
08013 Barcelona (Spain)

Sales
Tel. +34 935 478 181
E-mail: customerservice@simon.es



20.64.54.0717



IP66 K45 WATERTIGHT Floor boxes

FOR INDOOR AND OUTDOOR

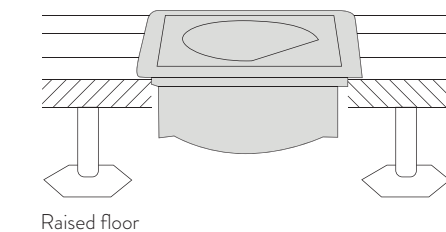
simon

Watertight installation systems flush-mounted in floor

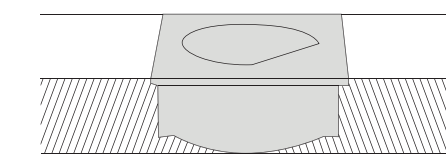
Indoor and outdoor often have optional connections that require additional protection for big flows of persons or when they are exposed to the effects of liquids and dust. When closed, the IP66 protection keeps energy, data and multimedia solutions insulated from knocks, undesired handling, dust, liquids and humidity

PREPARED AGAINST HARSH ENVIRONMENTS

TWO TYPES OF TRAYS



Raised floor



Concrete floor



Direct snap-fit



Airports



Shopping centres



Convention centres



Hotels



Sports centres



Terraces

PROTECTION



IP66

Complete protection against dust

Withstands water jets of 1 kg/cm² in any direction

Characteristics

IP66 protection level

The installation is finished by installing a drainage pipe to eliminate any condensation from the inside. The tray is supplied with a wood cover that prevents the entry of aggregates during installation.



Maximum strength

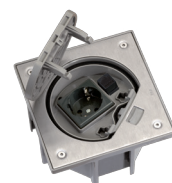
Plugged, it holds people's weight, protecting the cable when stepped.

Closed, withstands a maximum load of 1.000 kg

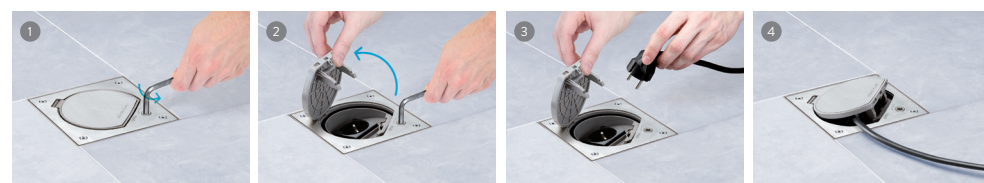


Energy, voice, data and multimedia in a single box

A wide range of mechanism-holders to be able to snap-fit any kind of K45 solution, socket-outlet and an RJ45 connector or the housing to install it.



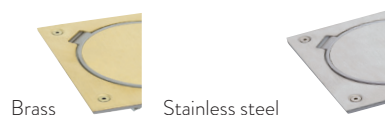
Safety lock, opening and closing system



The cover locking system prevents accidental closure or cable pinching.

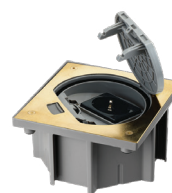
Reinforced cover

Cover design reinforced against side impacts



Safety cover

The hinge prevents it from being left open accidentally, eliminating a tripping hazard

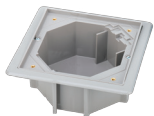


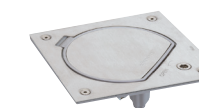
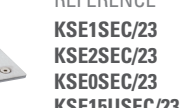
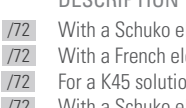
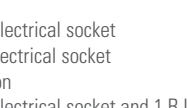
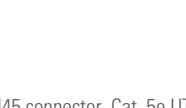




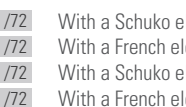
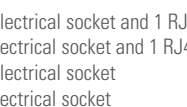
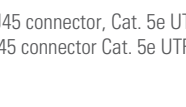





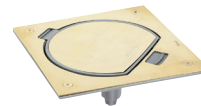





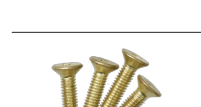
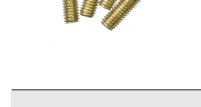






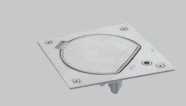
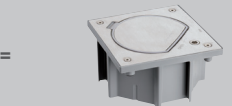

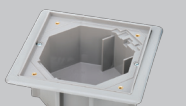
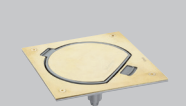
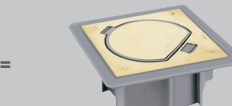
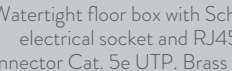

Protective film

The mechanism-holder frame incorporates a protective film to prevent it from being dirtied and damaged during installation



FINISH	RAL 7036
/23 Grey	/71 Brass
/72 Stainless Steel	

TRAYS		
INSTALLATION IN RAISED FLOOR		
	REFERENCE KGE170TF /23	DESCRIPTION Tray for recessing in raised floor
INSTALLATION IN CONCRETE FLOOR		
	REFERENCE KGE170 /23	DESCRIPTION Tray for recessing in concrete floor"
	REFERENCE ACSE	DESCRIPTION Accessory for joining trays in concrete floor
MECHANISM-HOLDERS THAT CAN BE COMBINED WITH BOTH TRAYS		
WITH SAFETY LOCK		
	REFERENCE KSE1SEC/23 /72	DESCRIPTION With a Schuko electrical socket
	REFERENCE KSE2SEC/23 /72	DESCRIPTION With a French electrical socket
	REFERENCE KSE0SEC/23 /72	DESCRIPTION For a K45 solution
	REFERENCE KSE15USEC/23 /72	DESCRIPTION With a Schuko electrical socket and 1 RJ45 connector, Cat. 5e UTP
	REFERENCE KSE25USEC/23 /72	DESCRIPTION With a French electrical socket and 1 RJ45 connector Cat. 5e UTP
	REFERENCE KSE16USEC/23 /72	DESCRIPTION With a Schuko electrical socket and 1 RJ45 connector, Cat. 6 UTP
	REFERENCE KSE26USEC/23 /72	DESCRIPTION With a French electrical socket and 1 RJ45 connector Cat. 6 UTP
WITH MANUAL CLOSURE		
	REFERENCE KSE15U/23 /72	DESCRIPTION With a Schuko electrical socket and 1 RJ45 connector, Cat. 5e UTP
	REFERENCE KSE25U/23 /72	DESCRIPTION With a French electrical socket and 1 RJ45 connector Cat. 5e UTP
	REFERENCE KSE1/23 /72	DESCRIPTION With a Schuko electrical socket
	REFERENCE KSE2/23 /72	DESCRIPTION With a French electrical socket
	REFERENCE KSE0/23 /72	DESCRIPTION For a K45 solution
	REFERENCE KSE16U/23 /72	DESCRIPTION With a Schuko electrical socket and 1 RJ45 connector, Cat. 6 UTP
	REFERENCE KSE26U/23 /72	DESCRIPTION With a French electrical socket and 1 RJ45 connector Cat. 6 UTP
	REFERENCE KSE10U/23 /72	DESCRIPTION With a Schuko electrical socket and housing for 1 RJ45 connector, with Keystone snap-fit

REFERENCE	DESCRIPTION
 KSE15U/23 /71	With a Schuko electrical socket and 1 RJ45 connector, Cat. 5e UTP
 KSE25U/23 /71	With a French electrical socket and 1 RJ45 connector Cat. 5e UTP
 KSE1/23 /71	With a Schuko electrical socket
 KSE2/23 /71	With a French electrical socket
 KSE0/23 /71	For a K45 solution
 KSE16U/23 /71	With a Schuko electrical socket and 1 RJ45 connector, Cat. 6 UTP
 KSE26U/23 /71	With a French electrical socket and 1 RJ45 connector Cat. 6 UTP
 KSE10U/23 /71	With a Schuko electrical socket and housing for 1 RJ45 connector, with Keystone snap-fit
SPARE PARTS	
 RKS001 /72 /71	DESCRIPTION Mechanism-holder hinged lid
 RKS003	DESCRIPTION Square sealing gasket
 RKS004	DESCRIPTION Circular sealing gasket
 RKS005 /72 /71	DESCRIPTION Pack with 4 screws for mechanism-holder fixing unit
	Concrete floor configuration example
 KGE170 /23	Tray for concrete floor
 KSE1SEC/23 /72	Mechanism-holder with safety lock
	Watertight floor box assembly
	Raised floor configuration example
 KGE170TF /23	Tray for raised floor
 KSE15U/23 /71	Mechanism-holder with manual closure
	Watertight floor box assembly
	Watertight floor box with safety lock and Schuko electrical socket. Stainless steel finish.
	Watertight floor box with Schuko electrical socket and RJ45 connector Cat. 5e UTP. Brass finish.

Technical information

IP66 K45 WATERTIGHT FLOOR BOXES

- Products designed under the Safety Requirements of Directive 2006/95/EC (Low Voltage) through compliance with standard UNE-EN 60670.
- Product with marking **CE**
- Temperature range during installation: -25°C to +60°C
- Maximum temperature during construction work of +90°C

CLOSED BOX

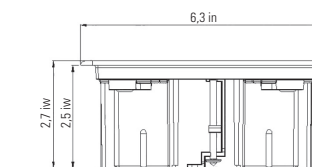
- IP66 protection level
- IK07 impact resistance level (with IP66)
- Maximum load per area unit: 12 kg/cm²
- Total maximum load: 1000 kg

OPEN BOX

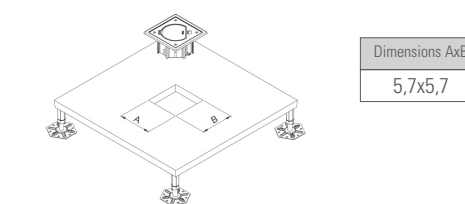
- IP20 protection level
- IK08 impact resistance level
- Maximum load per area unit: 4 kg/cm²
- Total maximum load: 100 kg

RAISED FLOOR TRAY

KGE170TF/23

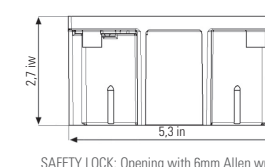


RAISED FLOOR INSTALLATION



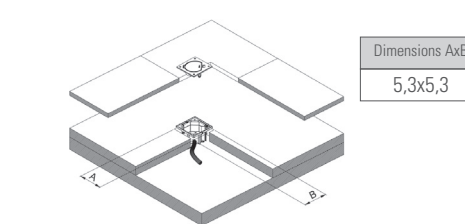
CONCRETE FLOOR TRAY

KGE170/23



Measurements in mm

CONCRETE FLOOR INSTALLATION



SAFETY LOCK: Opening with 6mm Allen wrench