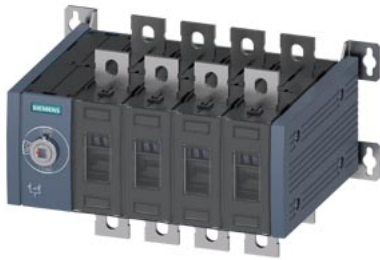


SENTRON, transfer switching equipment 3KC, manually operated, MTSE, size: 3, 4-pole, Iu: 250 A, Ue AC: 415 V, Ie at AC-33 B at 415 V: 250 A, Ie at AC-23 A at 690 V: 250 A, screw mounting, front operating mechanism, at the left end, without handle, busbar connection



Model	
product brand name	SENTRON
product designation	3KC transfer switching equipment
design of the product	manually operated
display version for switch position indicator door-coupling rotary operating mechanism	I ON- O OFF- II ON
design of the actuating element	Without handle
design of handle	without
type of the driving mechanism	Front operating mechanism
type of the driving mechanism motor drive	No
General technical data	
number of poles	4
type of device	fixed mounting
size of switch disconnecter	3
mechanical service life (operating cycles) for function sequence O-I-O typical	10 000
I ² t value	
<ul style="list-style-type: none"> with closed switch for combination switch + fuse at 500 V maximum 	426 500 A ² ·s
<ul style="list-style-type: none"> with closed switch at 690 V for combination switch + gG fuse maximum 	348 000 A ² ·s
<ul style="list-style-type: none"> of the fuse at 415 V maximum permissible 	780 005 A ² ·s
<ul style="list-style-type: none"> of the fuse at 500 V maximum permissible 	780 005 A ² ·s
<ul style="list-style-type: none"> of the gG fuse at 690 V maximum permissible 	525 005 A ² ·s
<ul style="list-style-type: none"> with closed switch for combination switch + fuse at 415 V maximum 	426 500 A ² ·s
position of the switch operating mechanism	at the left end
overvoltage category	IV
degree of pollution	3
insulation voltage	
<ul style="list-style-type: none"> rated value 	1 000 V
Protection class	
protection class IP	IP00
protection class IP	
<ul style="list-style-type: none"> with closed switch with cover or cable lug cover 	IP20
<ul style="list-style-type: none"> on the front 	IP00
Dissipation	
power loss [W]	
<ul style="list-style-type: none"> with conventional rated thermal current per device 	28 W
Main circuit	
operating power	

<ul style="list-style-type: none"> at AC-23 A at 400 V at 50/60 Hz rated value 	132 kW
<ul style="list-style-type: none"> at AC-23 A at 500 V rated value 	160 kW
operational current rated value	250 A
Auxiliary circuit	
number of connected NC contacts for auxiliary contacts	0
number of connected NO contacts for auxiliary contacts	0
number of connected CO contacts for auxiliary contacts	0
number of CO contacts for auxiliary contacts	0
number of NC contacts for auxiliary contacts	12
number of NO contacts for auxiliary contacts	12
suitability for use	
<ul style="list-style-type: none"> main switch 	Yes
<ul style="list-style-type: none"> switch disconnecter 	Yes
<ul style="list-style-type: none"> EMERGENCY OFF switch 	Yes
<ul style="list-style-type: none"> safety switch 	Yes
<ul style="list-style-type: none"> maintenance/repair switch 	Yes
product extension auxiliary switch	Yes
product extension optional	
<ul style="list-style-type: none"> motor drive 	No
<ul style="list-style-type: none"> voltage trigger 	No
Short circuit	
short-circuit current making capacity (I _{cm}) for switch disconnecter	
<ul style="list-style-type: none"> at 415 V AC without fuse link according to IEC 60947-6-1 rated value minimum 	36 kA
<ul style="list-style-type: none"> at 690 V AC without fuse link according to IEC 60947-3 rated value minimum 	26 kA
conditional short-circuit current with line-side fuse protection	
<ul style="list-style-type: none"> at 415 V by gG fuse according to IEC 60947-6-1 rated value 	100 kA
<ul style="list-style-type: none"> at 415 V by gG fuse rated value 	100 kA
<ul style="list-style-type: none"> at 500 V by gG fuse according to IEC 60947-3 rated value 	100 kA
<ul style="list-style-type: none"> at 690 V by gG fuse according to IEC 60947-3 rated value 	65 kA
Connections	
type of connectable conductor cross-sections for aluminum conductor stranded with lug	1x (25 ... 240 mm ²), 2x (25 ... 120 mm ²)
type of connectable conductor cross-sections	
<ul style="list-style-type: none"> with combination of Al conductor+switch 	250 A / 240 mm ²
<ul style="list-style-type: none"> for copper busbar 	1x (30x10 mm ²)
type of connectable conductor cross-sections for copper conductor	
<ul style="list-style-type: none"> stranded with lug according to DIN 46234 	1x (6 ... 240 mm ²), 2x (6 ... 150 mm ²)
<ul style="list-style-type: none"> stranded with lug according to DIN 46235 	1x (16 ... 185 mm ²), 2x (16 ... 150 mm ²)
type of electrical connection	
<ul style="list-style-type: none"> for main current circuit 	busbar connection
Mechanical Design	
height	164 mm
width	279 mm
depth	197.2 mm
fastening method	screw fixing
fastening method	
<ul style="list-style-type: none"> 4-hole front mounting 	No
<ul style="list-style-type: none"> front mounting with central attachment 	No
<ul style="list-style-type: none"> rail mounting 	No
net weight	6 500 g
Environmental conditions	
ambient temperature during operation	
<ul style="list-style-type: none"> minimum 	-25 °C
<ul style="list-style-type: none"> maximum 	70 °C
ambient temperature during storage	
<ul style="list-style-type: none"> minimum 	-50 °C

Approvals Certificates

General Product Approval



[Confirmation](#)



[Miscellaneous](#)

General Product Approval

Test Certificates

Marine / Shipping

other



[Type Test Certificates/Test Report](#)



[Confirmation](#)

[Miscellaneous](#)

Environment

[Environmental Confirmations](#)

Further information

Siemens has decided to exit the Russian market (see here).

<https://press.siemens.com/global/en/pressrelease/siemens-wind-down-russian-business>

Siemens is working on the renewal of the current EAC certificates.

Please contact your local Siemens office on the status of validity of the EAC certification if you intend to import or offer to supply these products to an EAC relevant market (other than the sanctioned EAEU member states Russia or Belarus).

Information on the packaging

<https://support.industry.siemens.com/cs/ww/en/view/109813875>

Information- and Downloadcenter (Catalogs, Brochures,...)

<http://www.siemens.com/lowvoltage/catalogs>

Industry Mall (Online ordering system)

<https://mall.industry.siemens.com/mall/en/en/Catalog/product?mlfb=3KC0438-0PE00-0AA0>

Service&Support (Manuals, Certificates, Characteristics, FAQs,...)

<https://support.industry.siemens.com/cs/ww/en/ps/3KC0438-0PE00-0AA0>

Image database (product images, 2D dimension drawings, 3D models, device circuit diagrams, ...)

http://www.automation.siemens.com/bilddb/cax_en.aspx?mlfb=3KC0438-0PE00-0AA0

CAX-Online-Generator

<http://www.siemens.com/cax>

Tender specifications

<http://www.siemens.com/specifications>

