



Sample image

LATERAL AUXILIARY CONTACTS for KG20 - KG317 and KH(R)16 - KH(R)25B



Designation: K0.H010/A11-E

Kind of contact operation: "A" not overlapping

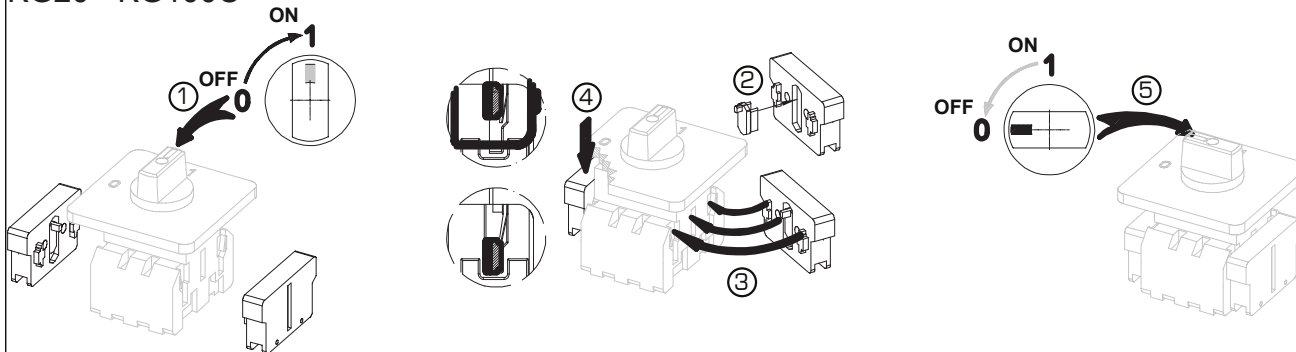
Contact combination: "11" 1 NO + 1 NC

Type of mounting: "-E" for type of mounting E

IEC 60947-3 EN 60947-3, VDE 0660 Teil 107											
Rated insulation voltage Ui											
					Voltage (V)		AC / DC				
					500		AC				
Rated uninterrupted current Iu/Ith											
Current (A)		Ambient temperature (°C)		Peak temperature (°C)		additional requirements					
10		55		60		Ambient temperature +55°C during 24 hours with peaks up to +60°C					
Conventional enclosed thermal current Ithe											
Current (A)		Ambient temperature (°C)		Peak temperature (°C)		Additional requirements		No. of stages (from - to)		Mounting	Mounting size
10		35		40		Ambient temperature +35°C during 24 hours with peaks up to +40°C		-- --		--	
Rated operational current Ie											
Utilization category					Voltage (V)			Current (A)			
AC-15					110 - 240			2,50			
AC-15					380 - 440			1,50			
AC-15					500			1			
AC-21A					500			10			
Max Fuse Rating IEC											
Fuse characteristic					No. of Fuses			Current (A)			
gG					1			10			
UL60947-4-1 , UL508											
Nominal Voltage											
					Voltage (V)		AC / DC				
					600		AC				
Rated insulation voltage Ui											
					Voltage (V)		AC / DC				
					600		AC				
Rated thermal current											
				Current (A)		Ambient temperature (°C)		Additional Text			
				10		0 - 40		--			
Pilot duty rating code											
Duty Code											
A600											
General Use											
AC / DC		Voltage (V)		Current (A)		No. of phases		No. of poles		No. of contacts in series	
AC		600		10		1		1		1	
General Information											
Text											
- Use copper wire only. Do not coat the wire end with tin.											
CSA											
Temp. rating of wire											
				Temperature rating (°C)		Current (A)		Text			
				75		--		only			
GENERAL TECHNICAL INFORMATION											
Tightening torque of screws											
					tightening torque (Nm)			tightening torque (lb-in)			
					0,40			3,50			
Stripping length											
					Length (mm)		--				
					6		STRIPPINGLENGTH				
Minimal ratings (voltage/current)											
		Voltage (V)		Current (mA)		Environment conditions		Environment conditions 2		Environment conditions 3	
		20		5		Ambient air must be free of particular contamination with sulfur and/or sulfurous components such as H2S etc.		In case extraordinary contamination with dust is expected an adequate dust protection is required.		--	

Size of conductor				
composition of conductor	Min. / Max. value	No. of conductor per terminal	Cross section (mm ²) or (AWG/kcmil)	Material of the wire
flexible wire	Max.	2	AWG 16	Copper
flexible wire	Max.	2	1.5mm ²	Copper
Single-core or stranded wire	Max.	2	AWG 14	Copper
Single-core or stranded wire	Max.	2	1.5mm ²	Copper
flexible wire with ferrule according to DIN 46228	Max.	2	1.5mm ²	Copper
Approbations				
Specification				Marking
IEC 60947-3; EN 60947-3; VDE 0660 Teil107				IEC 60947-3 EN 60947-3
UL 60947-4-1; CSA C22.2 No. 60947-4-1				
CSA C.22.2 No.14				
Power loss per pole				Power (W)
				0,40
Recommended screw driver				
Type of screw driver	Value			
Cross Screwdriver	PH1			
Flat blade	0,6x3,5			
Degree of protection				
IP - Code switch terminal				
IP20				
Conditions during transport and storing				
Minimum temperature (°C)		Maximum temperature (°C) additional requirements		
40		85 In case of temperatures below -5°C no shock load permissible		
Operating temperature				
Min. Temperature [°C]			Max. Temperature [°C]	
-25			60	

KG20 - KG100C



KH16 - KHR25B

