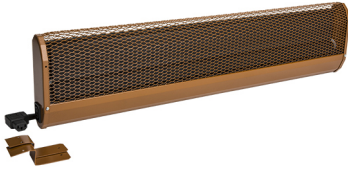


## PRODUCT DATASHEET

**Type:** KST100L  
**Art. Nr.:** 30718

**Short description**

Pew heater, connection left, 400W, 1m, 230V

**Product Description**

KST pew heaters are dark infrared heaters and are used for local heating of churches. Due to special ventilation slots, the heat is almost exclusively released to the front. Especially suitable for churches, which are visited 1x per week. The electrical connection is made via device plugs and the factory-made through-wiring simplifies installation. The devices have an integrated overheating protection with automatic restart, a shatterproof special heating element without a glowing heating coil, and an angle plug included in the scope of delivery. Protection rating: IP 21, RCD protection circuit, certification mark: ÖVE, CE marking, galvanized sheet steel, colour: RAL 8007 fawn, connection: left.

**ETIM characteristics**

<b>Model</b>	Church pew heating	<b>Voltage</b>	230 230 Volt
<b>Mounting method</b>	Surface mounting	<b>Number of heating levels</b>	1
<b>Power step OFF</b>	×	<b>Min. heating power</b>	400 Watt
<b>Mounting over cradle</b>	×	<b>Max. heating power</b>	400 Watt
<b>Degree of protection (IP)</b>	IP21	<b>Min. mounting height</b>	320 Metre
<b>Colour</b>	Other	<b>Max. mounting height</b>	800 Metre
<b>Compatible with Apple HomeKit</b>	×	<b>Height</b>	60 Millimetre
<b>Compatible with Google Assistant</b>	×	<b>Width</b>	1000 Millimetre
<b>Compatible with Amazon Alexa</b>	×	<b>Depth</b>	185 Millimetre
<b>IFTTT support available</b>	×	<b>RAL-number</b>	8003

Created on: 27/11/2023