

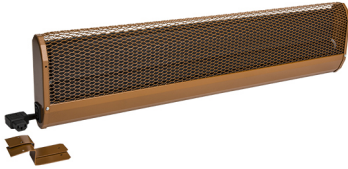
PRODUCT DATASHEET

Type: KST150L
Art. Nr.: 30825



Short description

Pew heater, connection left, 600W, 1.5m, 230V



Product Description

KST pew heaters are dark infrared heaters and are used for local heating of churches. Due to special ventilation slots, the heat is almost exclusively released to the front. Especially suitable for churches, which are visited 1x per week. The electrical connection is made via device plugs and the factory-made through-wiring simplifies installation. The devices have an integrated overheating protection with automatic restart, a shatterproof special heating element without a glowing heating coil, and an angle plug included in the scope of delivery. Protection rating: IP 21, RCD protection circuit, certification mark: ÖVE, CE marking, galvanized sheet steel, colour: RAL 8007 fawn, connection: left.

ETIM characteristics

Model	Church pew heating	Voltage	230 230 Volt
Mounting method	Surface mounting	Number of heating levels	1
Power step OFF	✘	Min. heating power	600 Watt
Mounting over cradle	✘	Max. heating power	600 Watt
Degree of protection (IP)	IP21	Min. mounting height	320 Metre
Colour	Other	Max. mounting height	800 Metre
Compatible with Apple HomeKit	✘	Height	60 Millimetre
Compatible with Google Assistant	✘	Width	1500 Millimetre
Compatible with Amazon Alexa	✘	Depth	185 Millimetre
IFTTT support available	✘	RAL-number	8003

Created on: 27/11/2023